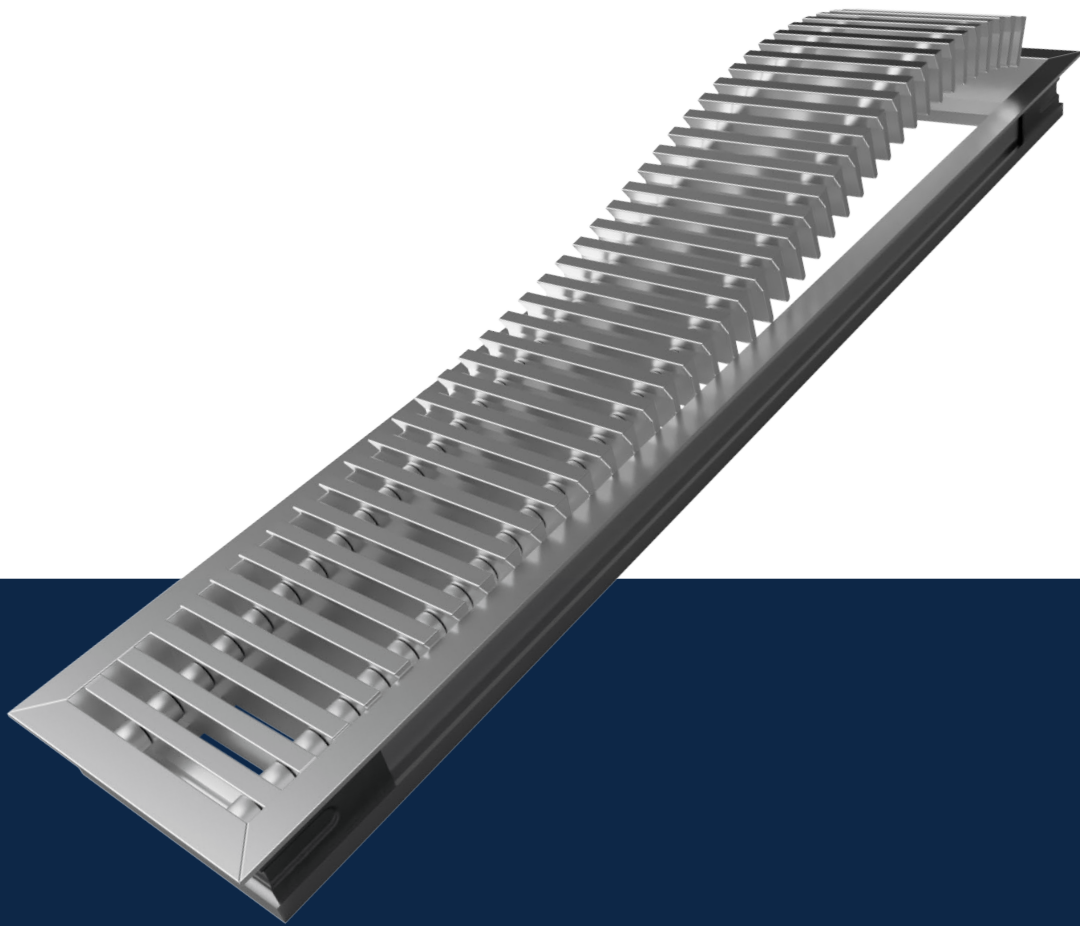


Air through perfection

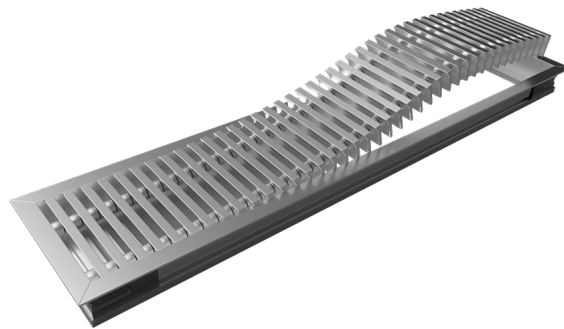
Floor grille

**WAVE**



**ACP**  
Architectural diffusers

## Floor grille WAVE



### Description

The WAVE linear floor grille is used for introducing or evacuating air.  
It can be used in various applications of ventilation systems, for example floor convector.

### Technical specifications

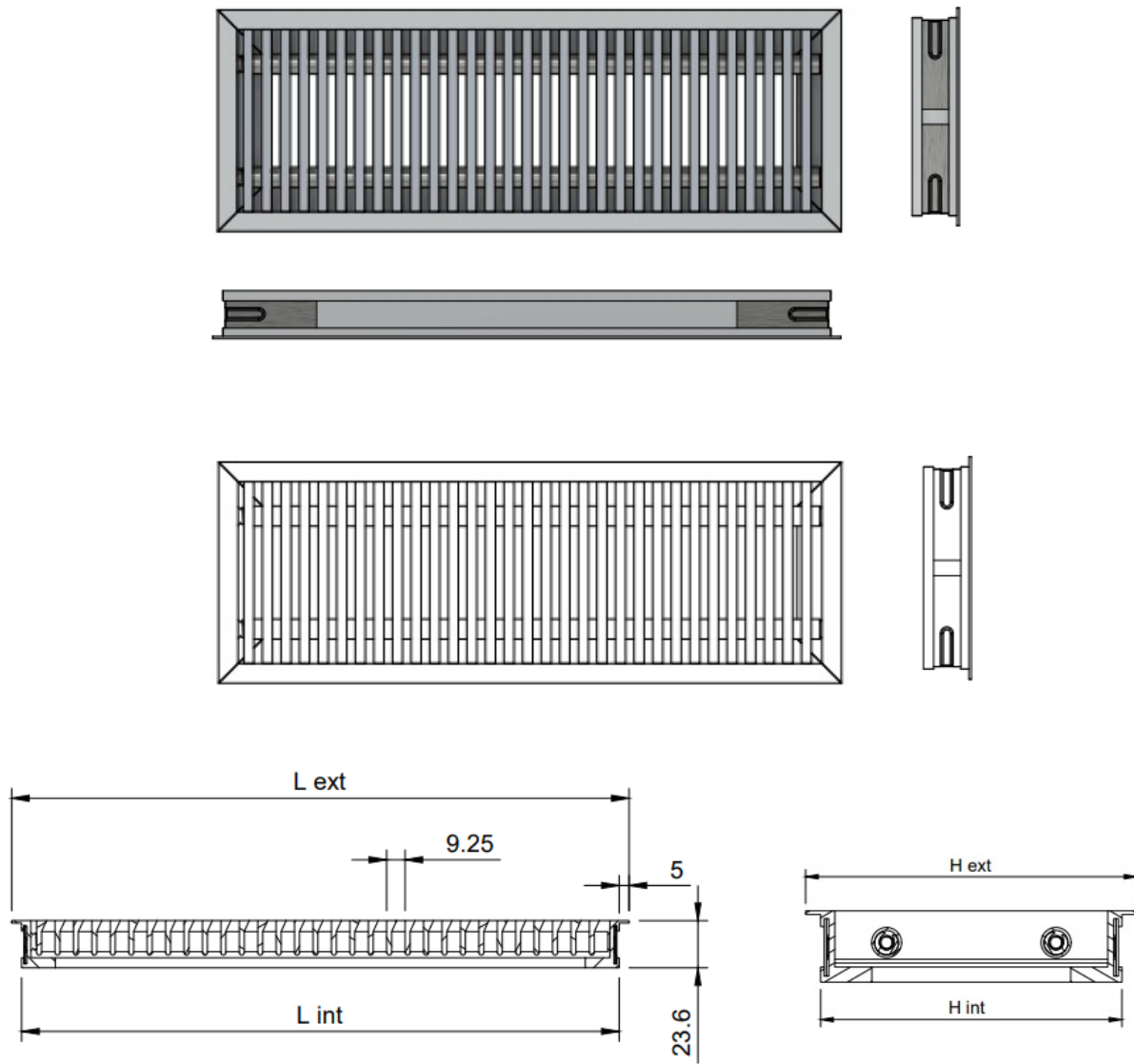
#### Characteristics

The grille is composed of the outer frame and the central part with blades .  
The blades of the grille are profiled at 15° and are perpendicular to the length.  
The blades area is removable allowing easy access behind the grille and easy mounting.  
The grille frame is provided with a flange and serves to mask the contact area between the grille and the floor.  
Dimensional limits: minimum 200x75 mm, maximum 3100x350 mm.

Materials

The product is made of extruded aluminum profiles with natural anodized finish.

Technical drawing



## Functional parameters

Air flow [m <sup>3</sup> /h]	L x H [mm]	300 x 100	400 x 100	600 x 100	300 x 150	400 x 150	600 x 150	400 x 200	600 x 200	800 x 200	1000 x 200	500 x 300	600 x 300	800 x 300	1000 x 300
		Ak [m <sup>2</sup> ]	0.008	0.011	0.017	0.017	0.023	0.035	0.034	0.052	0.07	0.089	0.072	0.087	0.117
100	Veff[m/s]	3.40	2.50												
	ΔPt [Pa]	9.00	5.00												
	X [m]	3.60	3.10												
	NR [dB(A)]	22.00	20.00												
150	Veff[m/s]	5.10	3.70	2.40											
	ΔPt [Pa]	20.00	11.00	5.00											
	X [m]	5.40	4.60	3.70											
	NR [dB(A)]	33.00	26.00	20.00											
200	Veff[m/s]	6.70	5.00	3.30	3.40	2.5									
	ΔPt [Pa]	35.00	19.00	8.00	9.00	5.0									
	X [m]	7.20	6.20	5.00	5.10	4.4									
	NR [dB(A)]	41.00	34.00	24.00	24.00	20.00									
250	Veff[m/s]	8.30	6.10	4.00	4.10	3.10									
	ΔPt [Pa]	54.00	29.00	13.00	13.00	7.00									
	X [m]	8.90	7.60	6.20	6.20	5.40									
	NR [dB(A)]	47.00	40.00	30.00	30.00	23.00									
300	Veff[m/s]		7.40	4.80	5.00	3.70	2.40								
	ΔPt [Pa]		43.00	18.00	19.00	11.00	5.00								
	X [m]		9.20	7.40	7.50	6.50	5.20								
	NR [dB(A)]		45.00	35.00	35.00	28.00	20.00								
350	Veff[m/s]		8.60	5.60	5.80	4.30	2.80								
	ΔPt [Pa]		58.00	25.00	26.00	14.00	6.00								
	X [m]		10.70	8.70	8.80	7.60	6.10								
	NR [dB(A)]		49.00	39.00	40.00	33.00	23.00								
400	Veff[m/s]			6.50	6.60	4.90	3.20	3.30	2.10						
	ΔPt [Pa]			33.00	34.00	19.00	8.00	7.70	4.00						
	X [m]			9.90	10.00	8.60	7.00	7.00	5.70						
	NR [dB(A)]			43.00	44.00	36.00	26.00	27.00	20.00						
500	Veff[m/s]			8.10	8.30	6.20	4.00	4.10	2.70	2.00					
	ΔPt [Pa]			51.00	54.00	30.00	13.00	13.00	6.00	3.00					
	X [m]			12.40	12.60	10.80	8.70	8.80	7.10	6.10					
	NR [dB(A)]			49.00	50.00	43.00	33.00	33.00	23.00	20.00					
600	Veff[m/s]					7.40	4.80	4.90	3.20	2.40					
	ΔPt [Pa]					43.00	18.00	19.00	8.00	4.00					
	X [m]					13.00	10.50	10.60	8.60	7.40					
	NR [dB(A)]					48.00	38.00	38.00	28.00	21.00					
700	Veff[m/s]						5.60	5.70	3.70	2.80	2.20	2.70	2.20		
	ΔPt [Pa]						25.00	25.00	11.00	6.00	4.00	6.00	4.00		
	X [m]						12.20	12.30	10.00	8.60	7.60	8.50	7.70		
	NR [dB(A)]						42.00	43.00	32.00	25.00	20.00	25.00	20.00		
800	Veff[m/s]						6.40	6.50	4.30	3.20	2.50	3.10	2.60		
	ΔPt [Pa]						32.00	33.00	14.00	8.00	5.00	7.00	5.00		
	X [m]						14.00	14.10	11.40	9.80	8.70	9.70	8.80		
	NR [dB(A)]						46.00	46.00	36.00	29.00	23.00	29.00	24.00		
900	Veff[m/s]						7.20	7.40	4.80	3.60	2.80	3.50	29.00	2.10	
	ΔPt [Pa]						41.00	42.00	18.00	10.00	6.00	10.00	6.00	4.00	
	X [m]						15.70	15.90	12.80	11.00	9.80	10.90	9.90	8.50	
	NR [dB(A)]						49.00	50.00	40.00	32.00	27.00	32.00	27.00	20.00	
1000	Veff[m/s]								5.40	4.00	3.10	3.90	3.20	2.40	
	ΔPt [Pa]								22.00	12.00	8.00	12.00	8.00	4.00	
	X [m]								14.30	12.30	10.90	12.20	11.00	9.50	
	NR [dB(A)]								43.00	35.00	30.00	35.00	30.00	23.00	
1250	Veff[m/s]								6.70	4.90	3.90	4.80	4.00	3.00	2.30
	ΔPt [Pa]								35.00	19.00	12.00	18.00	12.00	7.00	4.00
	X [m]								17.80	15.30	13.60	15.20	13.80	11.90	10.60
	NR [dB(A)]								49.00	42.00	36.00	41.00	37.00	29.00	24.00
1500	Veff[m/s]									5.90	4.70	5.80	4.80	3.60	2.80
	ΔPt [Pa]									28.00	17.00	26.00	18.00	10.00	6.00
	X [m]									18.40	16.40	18.20	16.60	14.30	12.70
	NR [dB(A)]									47.00	41.00	46.00	42.00	35.00	29.00
2000	Veff[m/s]												6.40	4.70	3.80
	ΔPt [Pa]												32.00	18.00	11.00
	X [m]												22.10	19.00	16.90
	NR [dB(A)]												50.00	43.00	37.00
2500	Veff[m/s]													5.90	4.70
	ΔPt [Pa]													27.00	17.00
	X [m]													23.70	21.10
	NR [dB(A)]													49.00	43.00

The legend

Ak [m<sup>2</sup>] - The free surface

Veff [m/s] - The speed of air in the grille

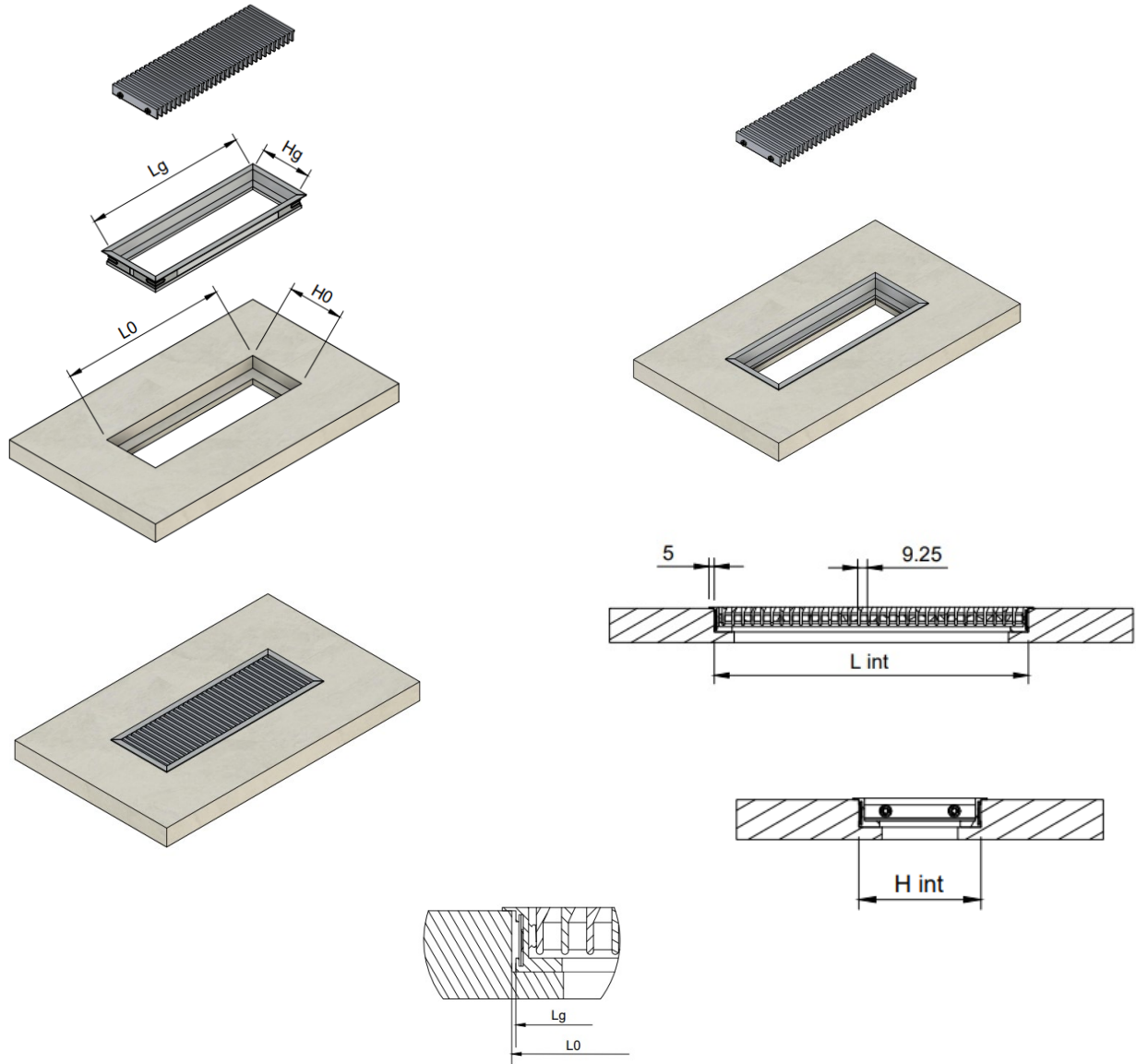
ΔPt [Pa] - Pressure loss

X [m] - The length of the air jet at a speed of 0.2 m/s

NR [dB (A)] - Noise level without room attenuation

Installation

Floor mounting



Order code

Example on how to place an order

Type	Dimensions
WAVE	
On request	