

Air through perfection

Egg crate grille with access

EGD-Q



ACP
Access grilles

Egg crate grille with access EGD-0



Description

EGD-0 is a return grille with access door and egg crate central part with 0 ° inclination.

The grille allows the evacuation of a high air flow with a minimum pressure loss.

Can be applied on the wall or false ceiling.

Technical specifications

Characteristics

The central part is egg crate type with size 12.5 x 12.5 mm and 0 ° inclination.

The opening system is click type (opening/closing by pressing) which facilitates access.

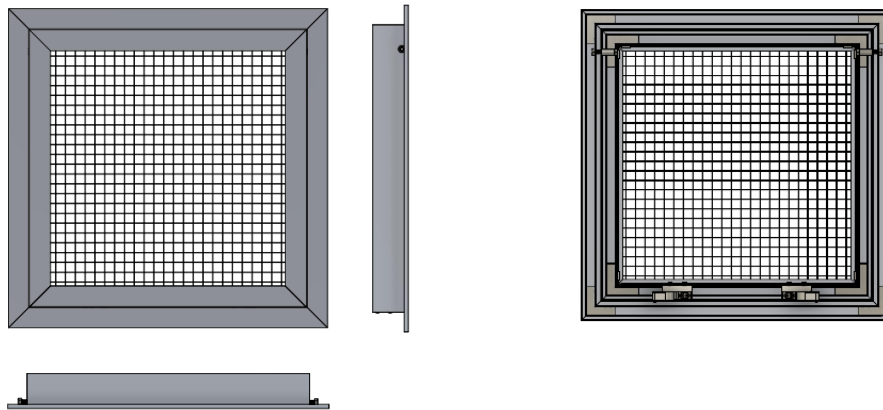
The grille is produced as standard without mounting holes. Optionally, mounting holes can be requested on the visible grille frame.

Materials

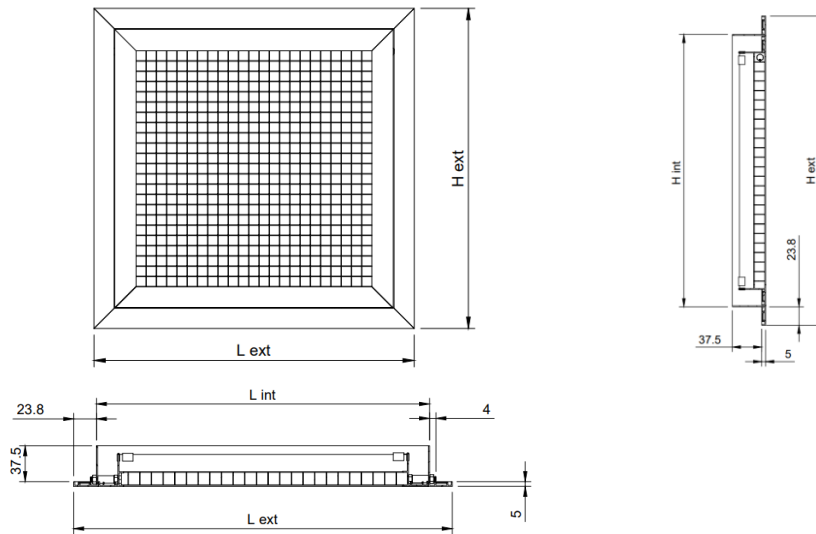
The grille is made of extruded aluminum electrostatic field painted in glossy white RAL 9016.

On request, the grille can be painted in other RAL colours.

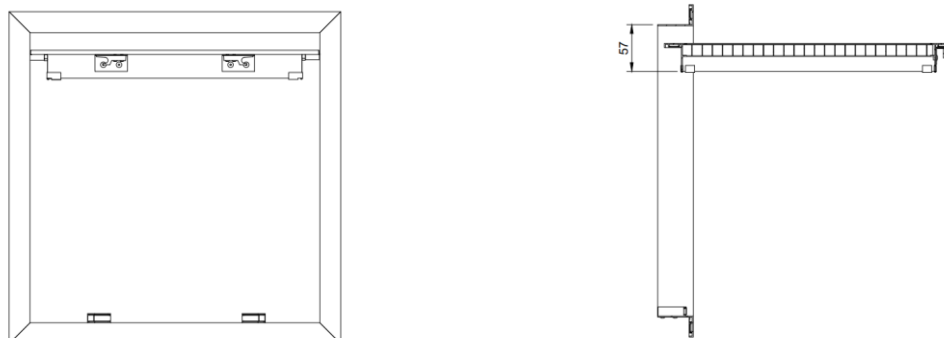
Technical drawing



Grille in closed position



Grille in open position



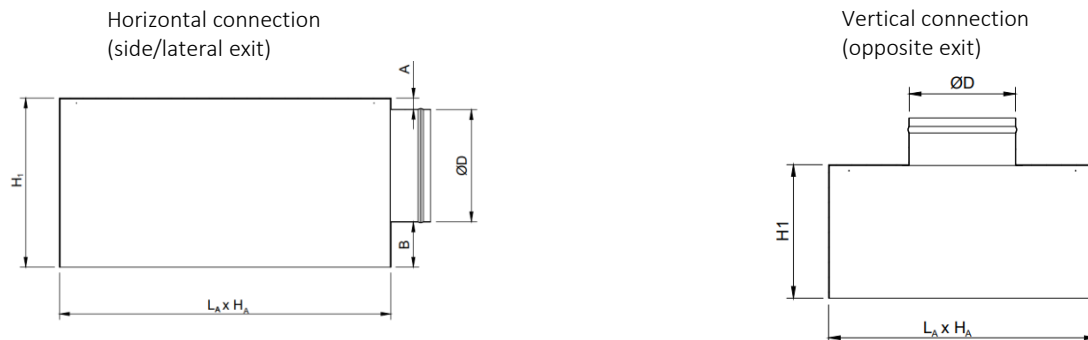
Accessories

The grille can be equipped with plenum box (adapter) or G4 air filter.

Adapter (plenum box)

The plenum connection to the circular duct can be with horizontal or vertical connection.

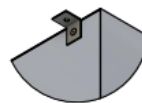
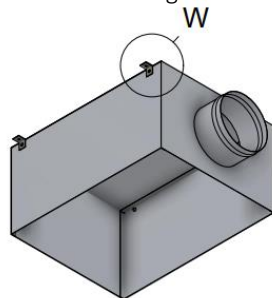
The plenum is provided with suspension elements (lugs) and bead roll on the spigot, for easy fixing of the flexible duct.



$L_A \times H_A$ = Lint x Hint grille + 5 mm

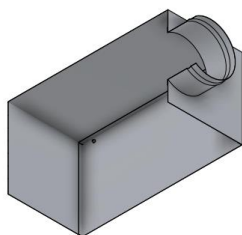
A, B, H_1 - depending on demand and $\varnothing D$

The adapter is made of Z140 galvanized sheet metal and is equipped with lugs for mounting.

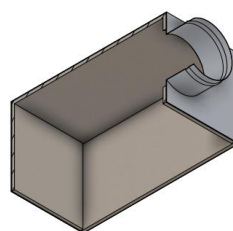


W - Suspension lug

The plenum is available in two options, uninsulated or insulated with 6 mm thick elastomeric rubber.



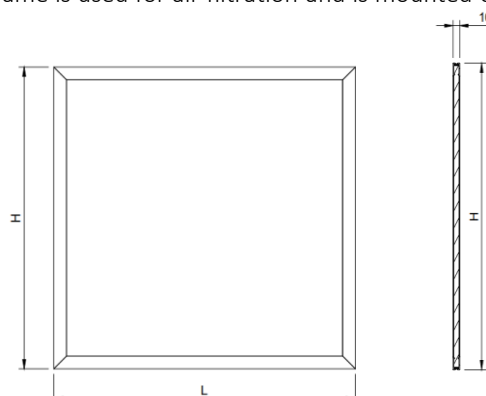
AN - Uninsulated adapter



AIZ - Insulated adapter

G4 air filter with frame (F-R)

G4 air filter with aluminum frame is used for air filtration and is mounted on the grille connection.



Air flow (m³/h)	LxH Ak [m²]	250x150 0.0106	350x200 0.0290	450x250 0.0560	500x250 0.0650	550x350 0.1140	550x400 0.1390	600x500 0.1880	650x650 0.2920	1000x700 0.5010
100	Veff NR [dB(A)] ΔPt [pa]	2.6 22.0 12.8	1.0 11.0 1.6	0.5 5.0 0.4						
200	Veff NR [dB(A)] ΔPt [pa]	5.2 37.0 51.0	1.9 19.0 6.5	1.0 12.0 1.7	0.9 9.0 1.4	0.5 4.0 0.4				
300	Veff NR [dB(A)] ΔPt [pa]		2.9 24.0 15.0	1.5 16.0 4.2	1.3 13.0 2.8	0.7 8.0 1.1	0.6 5.0 0.6			
400	Veff NR [dB(A)] ΔPt [pa]		3.8 29.0 26.5	2.0 18.0 7.0	1.7 17.0 5.1	1.0 9.0 1.8	0.8 8.0 1.2	0.6 4.0 0.6		
500	Veff NR [dB(A)] ΔPt [pa]		4.8 35.0 41.0	2.5 21.0 11.0	2.1 21.0 8.2	1.2 11.0 2.5	1.0 10.0 1.8	0.7 6.0 1.0		
600	Veff NR [dB(A)] ΔPt [pa]		5.7 39.0 60.5	3.0 25.0 16.0	2.6 24.0 11.5	1.5 16.0 4.0	1.2 11.0 2.6	0.9 8.0 1.4	0.6 5.0 0.7	
700	Veff NR [dB(A)] ΔPt [pa]			3.5 29.0 21.0	3.0 26.0 16.0	1.7 17.0 5.4	1.4 13.0 3.5	1.0 10.0 2.1	0.7 6.0 0.8	
800	Veff NR [dB(A)] ΔPt [pa]			4.0 32.0 29.0	3.4 30.0 20.5	1.9 19.0 6.5	1.6 14.0 4.6	1.2 11.0 2.7	0.8 8.0 1.0	
900	Veff NR [dB(A)] ΔPt [pa]			4.5 34.0 36.0	3.8 31.0 27.0	2.2 21.0 8.5	1.8 16.0 5.8	1.3 12.0 3.4	0.9 9.0 1.2	0.5 3.0 0.5
1000	Veff NR [dB(A)] ΔPt [pa]				4.3 33.0 34.0	2.4 21.0 10.5	2.0 18.0 7.5	1.5 16.0 3.6	1.0 12.0 1.5	0.6 6.0 0.5
1500	Veff NR [dB(A)] ΔPt [pa]				6.4 44.0 73.0	3.7 30.0 24.0	3.0 24.0 16.0	2.2 21.0 8.8	1.4 17.0 3.8	0.8 11.0 1.2
2000	Veff NR [dB(A)] ΔPt [pa]					4.9 35.0 42.0	4.0 31.0 28.5	3.0 26.0 16.5	1.9 19.0 7.0	1.1 16.0 2.3
3000	Veff NR [dB(A)] ΔPt [pa]					7.3 47.5 74.0	6.0 42.0 67.0	4.4 31.0 35.0	2.9 25.0 14.2	1.7 18.0 4.8
4000	Veff NR [dB(A)] ΔPt [pa]							5.9 42.0 64.0	3.8 29.0 25.0	2.2 20.0 8.5
5000	Veff NR [dB(A)] ΔPt [pa]								4.8 33.0 40.0	2.8 23.0 14.0
6000	Veff NR [dB(A)] ΔPt [pa]								5.7 39.0 61.0	3.3 28.0 21.0
7000	Veff NR [dB(A)] ΔPt [pa]								6.7 55.0 80.0	3.9 29.0 26.0
8000	Veff NR [dB(A)] ΔPt [pa]									4.4 34.0 36.0
9000	Veff NR [dB(A)] ΔPt [pa]									5.0 36.0 46.0

The legend

Ak [m²] - The free surface

Veff [m/s] - Air velocity in the grille

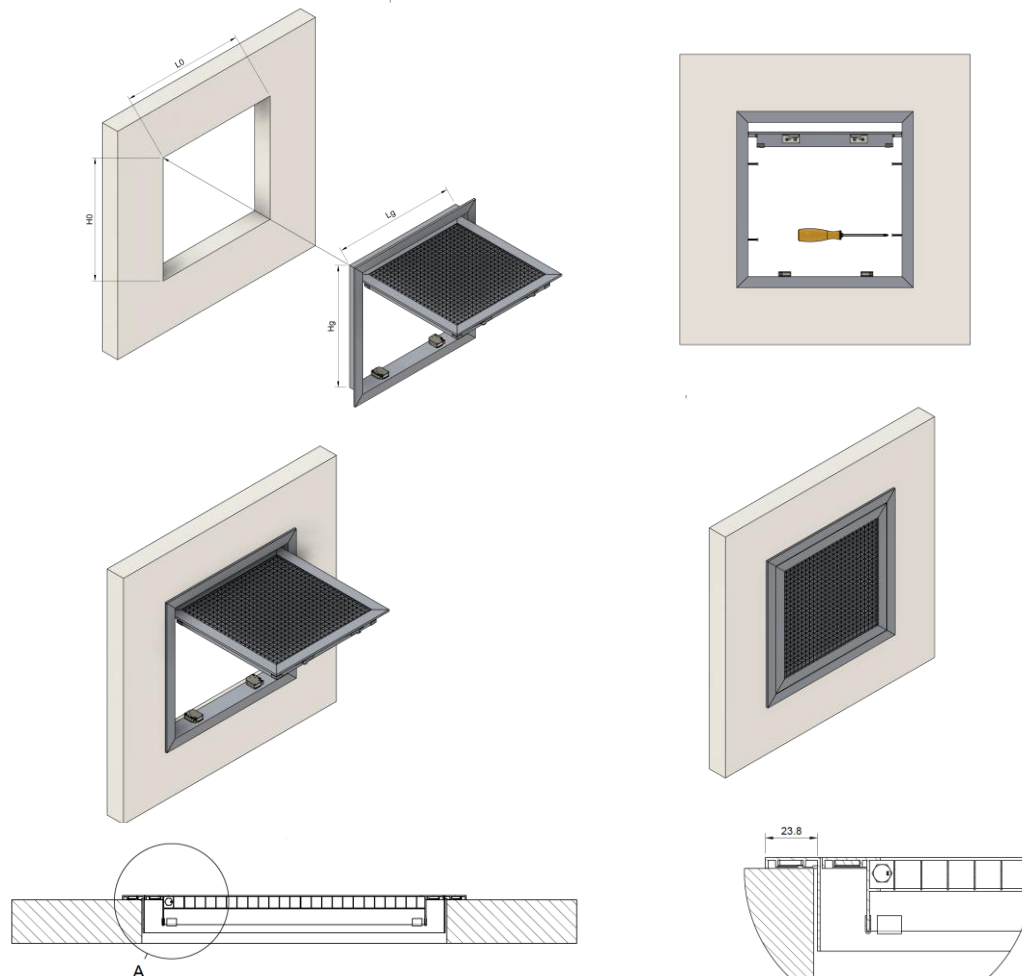
NR [dB (A)] - Noise level without room attenuation

ΔPt [Pa] - Pressure loss

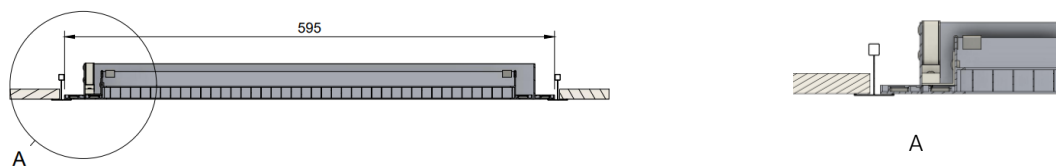
Installation

The grille can be mounted on the wall or in the false ceiling.

Installation in wall or continuous ceiling



Installation in T-bar suspended ceiling



Order code

Example on how to place an order

Type	Accessories	Finish
EGD-0		
F-R - Air filter G4		
AN - Uninsulated adapter		
AIZ - Insulated adapter		
RAL9016		
RAL.. - Other RAL colors on request		