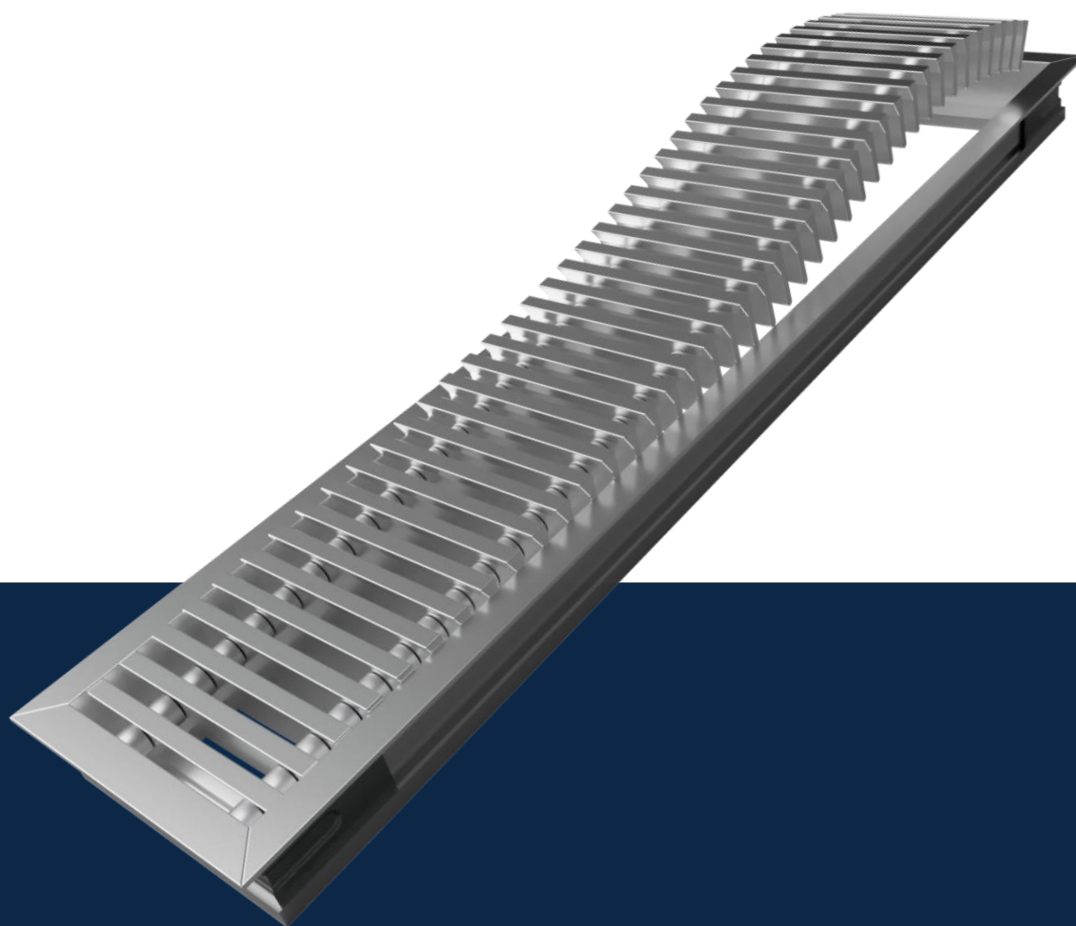


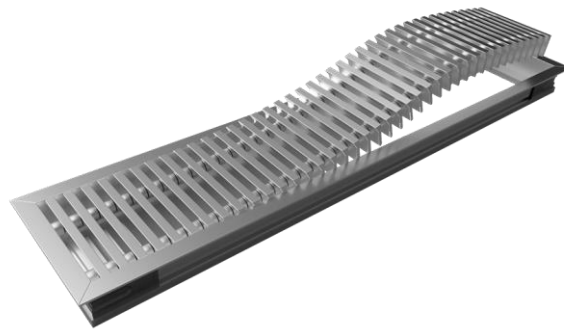
Air through perfection

Floor grille
WAVE



ACP
Architectural diffusers

Floor grille WAVE



Description

The WAVE linear floor grille is used for introducing or evacuating air.
It can be used in various applications of ventilation systems, for example floor convector.

Technical specifications

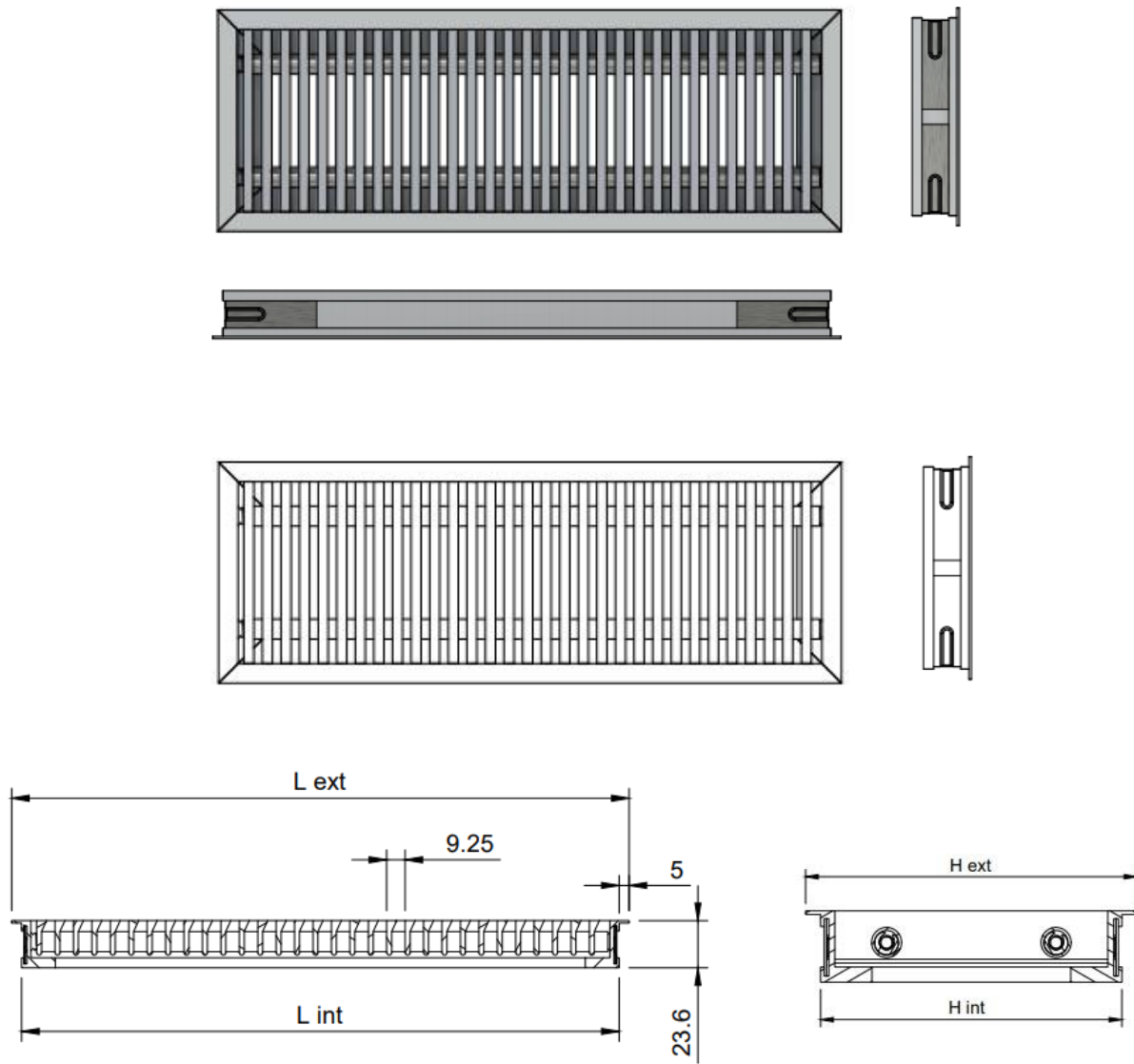
Characteristics

The grille is composed of the outer frame and the central part with blades .
The blades of the grille are profiled at 15° and are perpendicular to the length.
The blades area is removable allowing easy access behind the grille and easy mounting.
The grille frame is provided with a flange and serves to mask the contact area between the grille and the floor.
Dimensional limits: minimum 200x75 mm, maximum 3100x350 mm.

Materials

The product is made of extruded aluminum profiles with natural anodized finish.

Technical drawing



Functional parameters

Air flow [m ³ /h]	L x H [mm]	300 x 100	400 x 100	600 x 100	300 x 150	400 x 150	600 x 150	400 x 200	600 x 200	800 x 200	1000 x 200	500 x 300	600 x 300	800 x 300	1000 x 300
		Ak [m ²]	0.008	0.011	0.017	0.017	0.023	0.035	0.034	0.052	0.07	0.089	0.072	0.087	0.117
100	Veff[m/s]	3.40	2.50												
	ΔPt [Pa]	9.00	5.00												
	X [m]	3.60	3.10												
	NR [dB(A)]	22.00	20.00												
150	Veff[m/s]	5.10	3.70	2.40											
	ΔPt [Pa]	20.00	11.00	5.00											
	X [m]	5.40	4.60	3.70											
	NR [dB(A)]	33.00	26.00	20.00											
200	Veff[m/s]	6.70	5.00	3.30	3.40	2.5									
	ΔPt [Pa]	35.00	19.00	8.00	9.00	5.0									
	X [m]	7.20	6.20	5.00	5.10	4.4									
	NR [dB(A)]	41.00	34.00	24.00	24.00	20.00									
250	Veff[m/s]	8.30	6.10	4.00	4.10	3.10									
	ΔPt [Pa]	54.00	29.00	13.00	13.00	7.00									
	X [m]	8.90	7.60	6.20	6.20	5.40									
	NR [dB(A)]	47.00	40.00	30.00	30.00	23.00									
300	Veff[m/s]		7.40	4.80	5.00	3.70	2.40								
	ΔPt [Pa]		43.00	18.00	19.00	11.00	5.00								
	X [m]		9.20	7.40	7.50	6.50	5.20								
	NR [dB(A)]		45.00	35.00	35.00	28.00	20.00								
350	Veff[m/s]		8.60	5.60	5.80	4.30	2.80								
	ΔPt [Pa]		58.00	25.00	26.00	14.00	6.00								
	X [m]		10.70	8.70	8.80	7.60	6.10								
	NR [dB(A)]		49.00	39.00	40.00	33.00	23.00								
400	Veff[m/s]			6.50	6.60	4.90	3.20	3.30	2.10						
	ΔPt [Pa]			33.00	34.00	19.00	8.00	7.70	4.00						
	X [m]			9.90	10.00	8.60	7.00	7.00	5.70						
	NR [dB(A)]			43.00	44.00	36.00	26.00	27.00	20.00						
500	Veff[m/s]			8.10	8.30	6.20	4.00	4.10	2.70	2.00					
	ΔPt [Pa]			51.00	54.00	30.00	13.00	13.00	6.00	3.00					
	X [m]			12.40	12.60	10.80	8.70	8.80	7.10	6.10					
	NR [dB(A)]			49.00	50.00	43.00	33.00	33.00	23.00	20.00					
600	Veff[m/s]					7.40	4.80	4.90	3.20	2.40					
	ΔPt [Pa]					43.00	18.00	19.00	8.00	4.00					
	X [m]					13.00	10.50	10.60	8.60	7.40					
	NR [dB(A)]					48.00	38.00	38.00	28.00	21.00					
700	Veff[m/s]					5.60	5.70	3.70	2.80	2.20	2.70	2.20			
	ΔPt [Pa]					25.00	25.00	11.00	6.00	4.00	6.00	4.00			
	X [m]					12.20	12.30	10.00	8.60	7.60	8.50	7.70			
	NR [dB(A)]					42.00	43.00	32.00	25.00	20.00	25.00	20.00			
800	Veff[m/s]					6.40	6.50	4.30	3.20	2.50	3.10	2.60			
	ΔPt [Pa]					32.00	33.00	14.00	8.00	5.00	7.00	5.00			
	X [m]					14.00	14.10	11.40	9.80	8.70	9.70	8.80			
	NR [dB(A)]					46.00	46.00	36.00	29.00	23.00	29.00	24.00			
900	Veff[m/s]					7.20	7.40	4.80	3.60	2.80	3.50	2.90	2.10		
	ΔPt [Pa]					41.00	42.00	18.00	10.00	6.00	10.00	6.00	4.00		
	X [m]					15.70	15.90	12.80	11.00	9.80	10.90	9.90	8.50		
	NR [dB(A)]					49.00	50.00	40.00	32.00	27.00	32.00	27.00	20.00		
1000	Veff[m/s]							5.40	4.00	3.10	3.90	3.20	2.40		
	ΔPt [Pa]							22.00	12.00	8.00	12.00	8.00	4.00		
	X [m]							14.30	12.30	10.90	12.20	11.00	9.50		
	NR [dB(A)]							43.00	35.00	30.00	35.00	30.00	23.00		
1250	Veff[m/s]								6.70	4.90	3.90	4.80	4.00	3.00	2.30
	ΔPt [Pa]								35.00	19.00	12.00	18.00	12.00	7.00	4.00
	X [m]								17.80	15.30	13.60	15.20	13.80	11.90	10.60
	NR [dB(A)]								49.00	42.00	36.00	41.00	37.00	29.00	24.00
1500	Veff[m/s]									5.90	4.70	5.80	4.80	3.60	2.80
	ΔPt [Pa]									28.00	17.00	26.00	18.00	10.00	6.00
	X [m]									18.40	16.40	18.20	16.60	14.30	12.70
	NR [dB(A)]									47.00	41.00	46.00	42.00	35.00	29.00
2000	Veff[m/s]												6.40	4.70	3.80
	ΔPt [Pa]												32.00	18.00	11.00
	X [m]												22.10	19.00	16.90
	NR [dB(A)]												50.00	43.00	37.00
2500	Veff[m/s]													5.90	4.70
	ΔPt [Pa]													27.00	17.00
	X [m]													23.70	21.10
	NR [dB(A)]													49.00	43.00

The legend

Ak [m²] - The free surface

Veff [m/s] - The speed of air in the grille

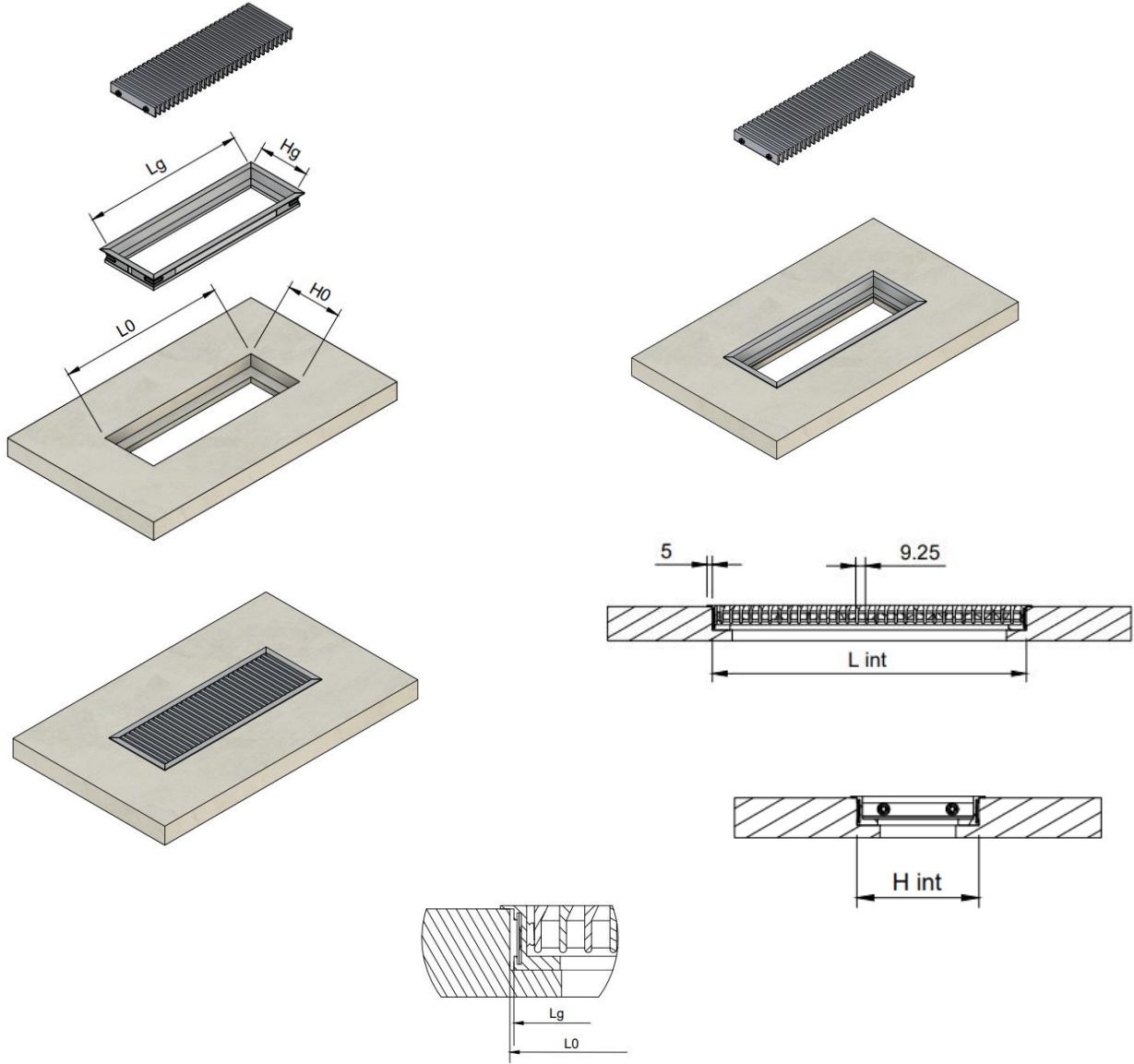
ΔPt [Pa] - Pressure loss

X [m] - The length of the air jet at a speed of 0.2 m/s

NR [dB (A)] - Noise level without room attenuation

Installation

Floor mounting



Order code

Example on how to place an order

Type	Dimensions
WAVE	
On request	