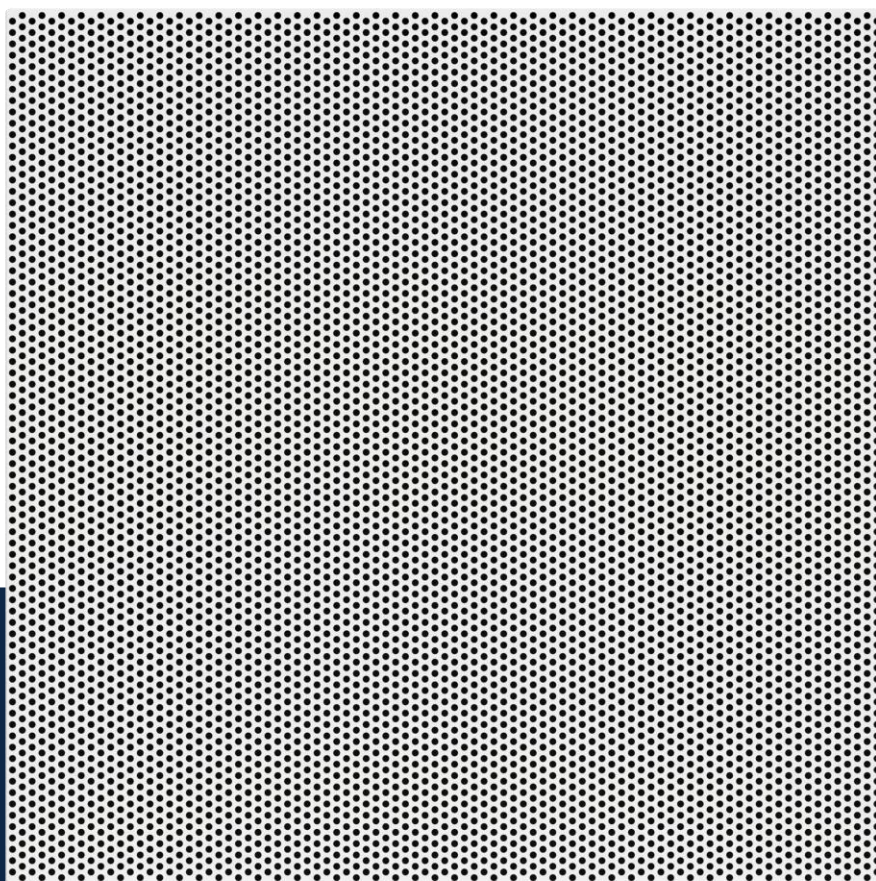


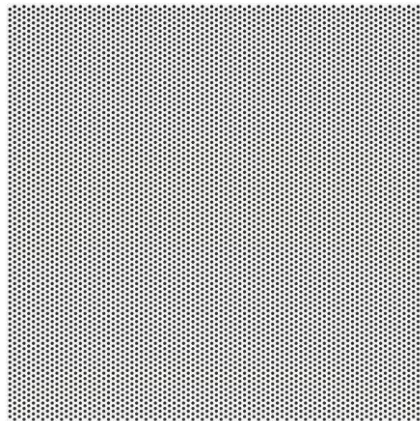
Air through perfection

Perforated grille



ACP
Grilles

Perforated grille PF



Description

The perforated grille with circular holes is used to introduce or evacuate air.
The diffuser is used for mounting in a false suspended ceiling with dimensions of 600x600 mm.
It is recommended for installations with constant or variable air flow.

Technical specifications

Characteristics

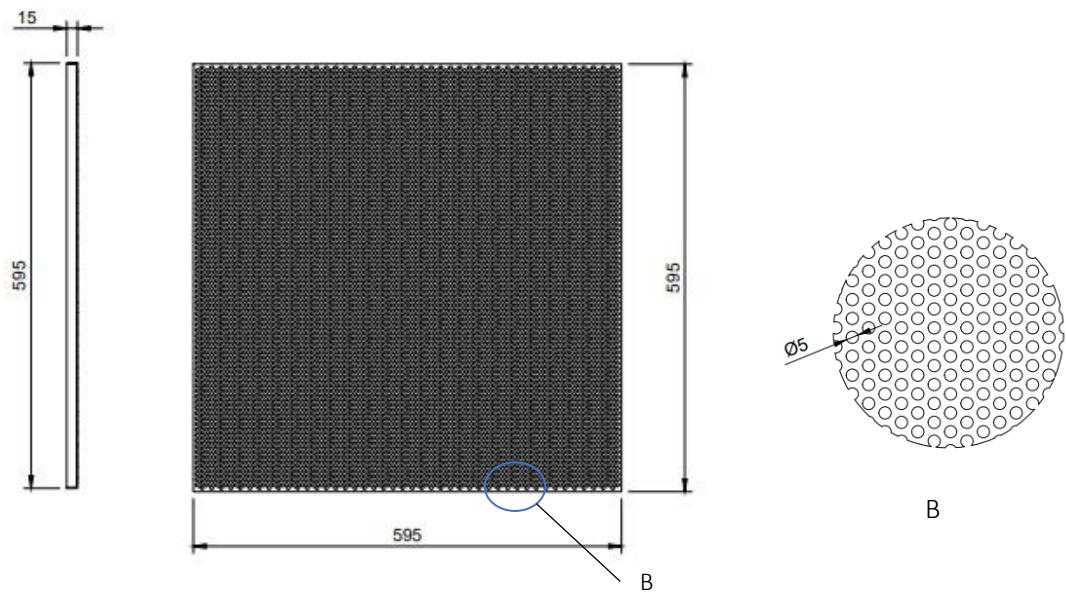
The external dimensions of the diffuser are 595x595 mm.
The circular perforations have a diameter of 5 mm.
The grille is connected to the ducting system via the plenum box.

Materials

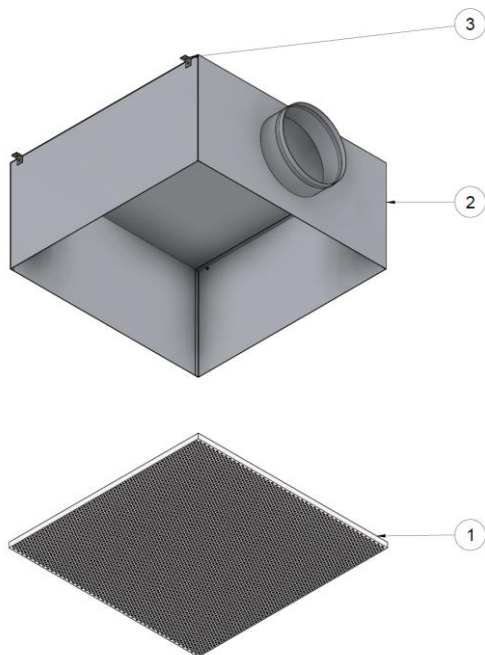
The grille is made of galvanized steel sheet and is electrostatic field painted in glossy white RAL 9016.

Other RAL colours are available on request.

Technical drawing



Product specifications



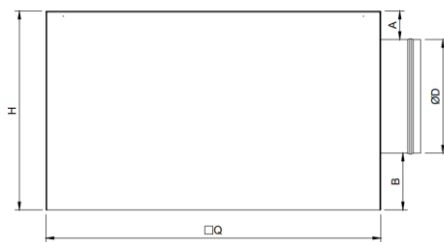
- 1- Perforated grille PF
- 2- Plenum box (optional)
- 3- Suspension element (lug)

Accessories

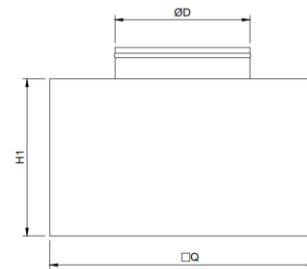
The grille can be delivered with a connecting plenum box to the circular duct, with horizontal or vertical connection. The plenum is provided with suspension elements (lugs) and bead roll on the spigot, for easy fixing of the flexible duct. Optionally, a perforated damper can be mounted on the plenum connection to balance the air flow.

Adapter (plenum box)

Horizontal connection
(side/lateral exit)

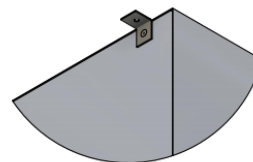
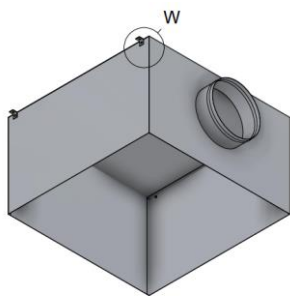


Vertical connection
(opposite exit)



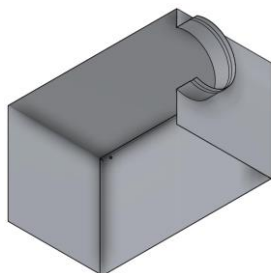
□Q: 590 x 590 mm – for mounting in false suspended ceiling 600x600 mm
A, B, H1 – on request
H - depending on ØD, A and B

The adapter is made of Z140 galvanized steel sheet and has 4 suspension lugs.

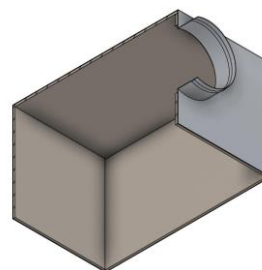


W - Suspension lug

On request, the plenum can be insulated with 6 mm thick elastomeric rubber.

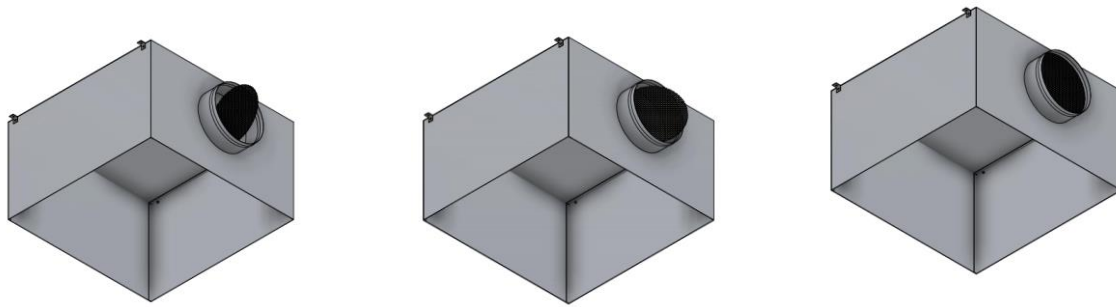


AN - Uninsulated adapter



AIZ - Insulated adapter

Perforated damper



Position 0°

Position 45°

Position 90°

The perforated damper is mounted on the adapter spigot and has the role of balancing the air flow.

Functional parameters

Supply

| Air flow [m ³ /h] | LxH | 595x595 |
|---------------------------------|----------------------|---------|
| | Ak [m ²] | 0.150 |
| 700 | Veff [m/s] | 1.3 |
| | X [m] | 1.8 |
| | NR [dB(A)] | 27.0 |
| | ΔPt [Pa] | 7.0 |
| 1000 | Veff[m/s] | 1.9 |
| | X [m] | 2.6 |
| | NR [dB(A)] | 39.0 |
| | ΔPt [Pa] | 15.0 |
| 1600 | Veff [m/s] | 3.0 |
| | X [m] | 3.1 |
| | NR [dB(A)] | 54.0 |
| | ΔPt [Pa] | 36.0 |

Exhaust

| Air flow [m ³ /h] | LxH | 595x595 |
|---------------------------------|----------------------|---------|
| | Ak [m ²] | 0.150 |
| 700 | Veff [m/s] | 1.30 |
| | NR [dB(A)] | 14 |
| | ΔPt [Pa] | 23 |
| 1000 | Veff [m/s] | 1.9 |
| | NR [dB(A)] | 20.0 |
| | ΔPt [Pa] | 33.0 |
| 1600 | Veff [m/s] | 3.0 |
| | NR [dB(A)] | 36.0 |
| | ΔPt [Pa] | 85.0 |

The legend

Ak [m²] - The free surface

Veff [m/s] – Air velocity in the grille

NR [dB (A)] - Noise level without room attenuation

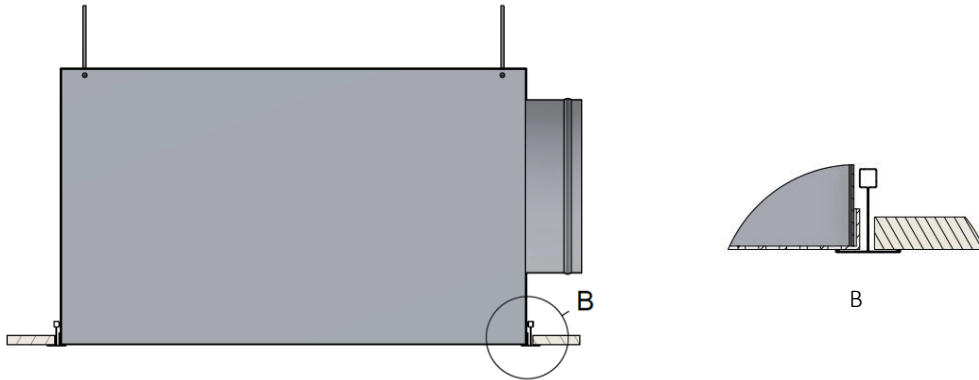
X [m] - The length of the air jet at a speed of 0.2 m/s

ΔPt [Pa] - Pressure loss

Installation

The diffuser is recommended for mounting in 600 x 600 mm false suspended ceiling.

Installation in T-bar suspended ceiling



Order code

Example on how to place an order

| Type | Dimensions | Accessories | Finish |
|-------------------------------------|--------------|-------------|--------|
| PF | 595 x 595 mm | | |
| AIZ - Insulated adapter | | | |
| AN - Uninsulated adapter | | | |
| Perforated damper (plenum box) | | | |
| RAL9016 | | | |
| RAL.. - Other RAL colors on request | | | |